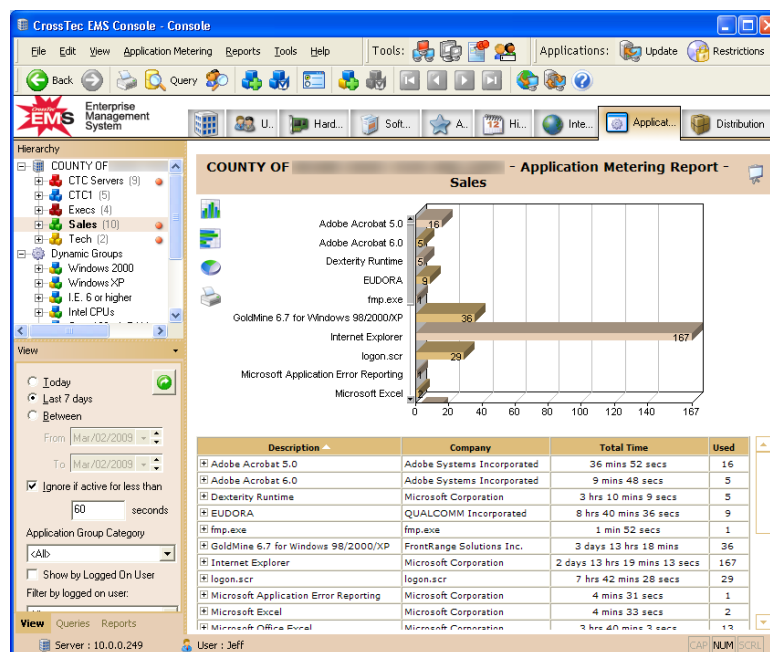


EMS

Enterprise Management System



CrossTec EMS is a network level IT asset management system. EMS facilitates central management of enterprise PCs in a secure, coordinated, and efficient manner. EMS offers software distribution; powerful hardware and software inventory; application and Internet metering; and PC remote control while ensuring compliance with configuration standards.

CrossTec EMS allows managers to view every IT asset in an enterprise. This allows control and management of IT assets, eliminates waste and redundancy and complies with ever-tightening government and corporate regulations.

Benefits

- **Ease of Use** – EMS requires minimum training to fully utilize its many features, and is easier to use than most other asset management products in its class.
- **Save Money** – Knowing the inventory of hardware and software is critical when deciding whether to purchase more IT assets, redistribute current assets, or retire them completely – along with their costly maintenance contracts and renewal fees. EMS also serves as a valuable budgeting tool.
- **Keep PCs Current** - The flexibility and multi-delivery options of EMS' software distribution feature make it easy to keep network PCs current.

Features

- **Software Distribution** – Flexible, multi-delivery option distributes software to targeted PCs, departments, or the entire organization.
- **Inventory Management** – Capture the full hardware and software inventory on every PC. Track this information over time to detect unauthorized additions or modifications to a target PC's hardware or software configuration. View and report on inventory summaries for the entire network or drill down into each individual PC for detailed information about software licensing and hardware configurations.
- **Application Metering** – Reports on all applications used on a target PC, detailing the time the application was started and finished, and the actual time of use. Data can also be viewed at a department level.
- **Internet Metering** - Provides a detailed summary of Internet (or Intranet) activity on a user's PC, and monitors current URL viewing levels across the enterprise.
- **Alerting and Warning** – Powerful PC and network alerting of potential issues.
- **Modular design** – Users dictate what is included; optional Remote Control and Help Desk functions.