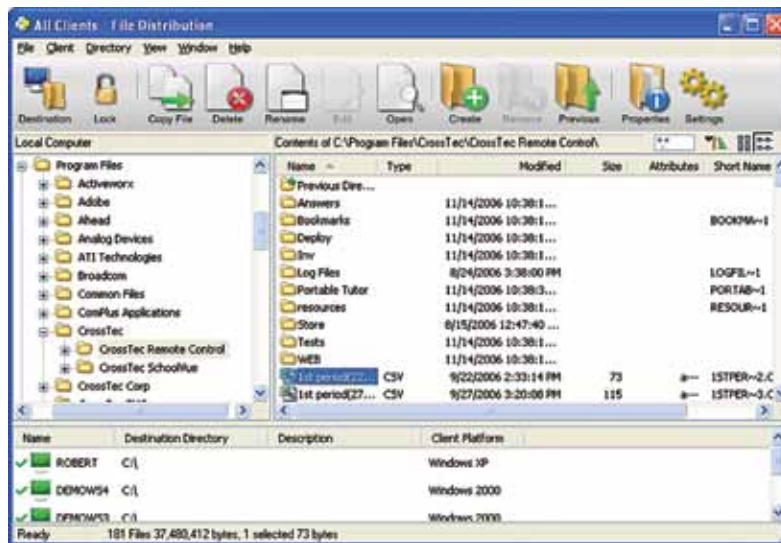


Remote Control



CrossTec Remote Control provides a single solution for remote support. Monitor multiple systems in a single action; deliver hands-on remote support or interactive training. Gather real-time inventory and system data. CrossTec Remote Control provides the ability to support Windows, Mac, Linux, Solaris and mobile devices from a single desktop, Pocket PC, USB drive or via a browser plug-in.

CrossTec Remote Control also provides a range of supporting tools including: dynamic hardware and software inventory reports, systems management tools, full audio support and the ability to show a target screen in real-time.

The show function can be used to conduct computer-based training without the need for overhead projectors or additional hardware. With the inclusion of CrossTec SchoolVue classroom management software, the Control screen, a selected monitor or just a selected application can be shown to any number of connected computers in real-time. A range of on-screen annotation tools can be used to aid in presentations or training.

Benefits

- **Security** - Comprehensive security is built into all modules- from simple password protection, integration with NT Security, Active Directory, and 256 bit AES encryption. Remote sessions can be recorded and replayed for audit purposes. Individual Control users and Client workstations can be profiled to provide different security levels and capabilities.
- **Ease of Use** - It is almost effortless to use CrossTec Remote Control, freeing up time for mission critical projects.
- **Stability** - Gain peace of mind from CrossTec's dependable stability.
- **Speed** - CrossTec's high-speed file transfer, synchronization, and distribution utility enables the user to copy files to multiple PCs simultaneously. "Delta File Transfer" only copies the portions of files that are different on the various machines. Scripting and scheduling options allows these tasks to be performed at any time- even during the middle of the night when no one is at the office.
- **Enabled support for 32bit and 64bit Vista Operating Systems.**

Features

- **Remote Control** - Watch, share, or control the screen, keyboard/ mouse of a workstation regardless of color depth, resolution, network protocol or operating system.
- **Monitor Mode** - A "Thumbnail" view of all connected Client workstations is provided. Simply mouse over a specific thumbnail for an expanded view of that selected PC. This View also provides key information such as OS type, network address, the current logged on user and the computer name for easy identification.
- **Hardware and Software Inventories** - Obtain a real-time view of the installed hardware and software on a target workstation with a simple keystroke and without leaving the Control program. Over 80 items of information are collected about the hardware or environment of the Client PC, as well as a full inventory of current installed applications and installed hot fixes. The user can remotely view, and security permitting, control applications in memory, processes running and installed services to aid in remote support and diagnostics.
- **File Transfer** - Transfer and manipulate files between workstations using a simple "drag & drop" interface. Synchronize directories on two workstations or edit files and attributes directly. Intelligent "Delta File Transfer" reduces data transfer times when overwriting files that already exist.
- **File Distribution** - Distribute files and data from a central CrossTec workstation to multiple Client workstations simultaneously and with a minimum of keystrokes. File distribution is allowed on all connected Clients, selected Clients, a pre-defined group of Clients, or to the Client "Desktop" or "My Documents" folder.
- **Smartcard Support** - any Smartcard login performed on the Control PC is re-directed and applied on the Client PC.

Remote Control



System Requirements

CROSSTEC REMOTE CONTROL:

IBM compatible 486 or higher with 4Mb RAM
10Mb free disk space

CROSS-PLATFORM SUPPORT:

Vista, XP, Win 2000/2003/2008, Win 98/95, Win NT , Mac OS X (Client), Pocket PC, Terminal Server, as well as all 64 bit Windows

CROSS-PROTOCOL:

IPX/SPX, NetBIOS or TCP/IP (under Windows Sockets)

LINUX REQUIREMENTS:

Supports SuSE, Red Hat / Enterprise and Fedora distributions.

MAC REQUIREMENTS:

Compatible with MAC OS X Universal

Mobile:

Operating System: Windows CE (4.2 and later), Pocket PC (2003 and later)
and Windows Mobile (5.0 and later).

ActiveSync / WiFi wireless LAN capabilities

Device RAM: 32Mb (64Mb recommended)

Control: 15Mb

Storage: 7Mb

Storage: 10Mb free space required



CrossTec Corporation
500 NE Spanish River Blvd
Suite 201
Boca Raton, FL 33431
(800)675.0729
fax (561)391.5820

www.CrossTecSoftware.com