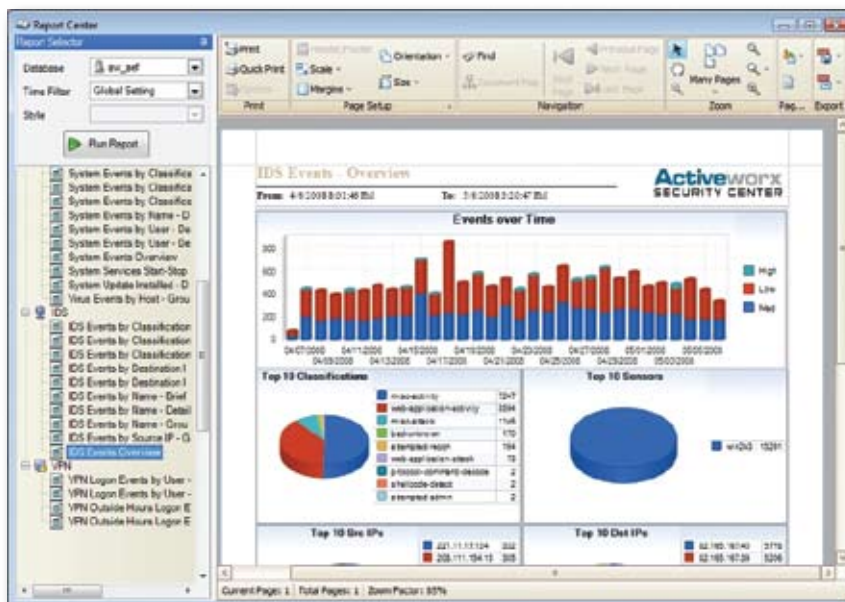


Activeworx Log Center™



Activeworx Log Center™
www.CrossTecSoftware.com

Activeworx Log Center™ is a log collection appliance that is fully integrated with CrossTec's family of security and log management solutions. Based on the award-winning Activeworx™ platform, the Activeworx Log Center™ combines a high-speed raw logging tool with an extensive compliance, forensic, and reporting feature set. Activeworx Log Center™ not only captures network events from all systems, but also encrypts and ensures data integrity; while indexing the data and providing powerful search capabilities rarely found in an out-of-the-box compliance and reporting solution.

Activeworx Log Center™ is appliance-based and provides for software plug-ins for robust, cost-effective scaling in distributed environments. Full integration with Activeworx Enterprise™ is a hallmark of the Activeworx™ platform.

Features

- Raw Audit Logging and Log Management of all events generated by virtually any computer or device connected to your network.
- Create dynamic schemas based on customized rules to perform complex queries with functionality such as lists, groups, sorts, and "most frequent", among others.
- Activeworx Log Center™ has been tested and is capable of logging over 50,000 EPS sustained and logs directly to flat files with full indexing and search capabilities.
- Activeworx offers three flavors of appliance options, thereby enabling connectivity with every deployment configuration.
- Activeworx Log Center™ is based on the Activeworx™ platform and can be readily integrated with the Activeworx Enterprise, thus adding powerful forensic capabilities to an incredibly robust logging system.
- A built-in report center provides users with incident-based and compliance-based intelligence and reports.
- Correlation based alerting methodologies enable Activeworx Log Center™ to reach through Syslog and e-mail protocols, thus reaching the appropriate personnel to manage the potential breach(es) in a time-sensitive manner.
- Interactive graphing and diagramming demonstrate the event-to-network relationship from a historical perspective. Upon display, events may be seen in multiple formats with variable graphing and customized reporting views.
- Enhanced security and log management control enables users and operators to maintain a consistent, more in-depth picture of the corporate network and the events impacting it.

CrossTec Corporation
500 NE Spanish River Blvd
Suite 201
Boca Raton, FL 33431
(800)675.0729
fax (561)391.5820



www.CrossTecSoftware.com

Activeworx Log Center™

Benefits

- **Compliance**
Activeworx Log Center™ is a compliance ready solution that can be used as demonstrable evidence for regulatory compliance regulations
- **Historical Understanding**
Activeworx Log Center™ gives users the ability to generate complex lists, groups, and sorts, including detailing the most frequent occurrences, from historical, raw data.
- **Log Visualization**
Activeworx Log Center™ offers customizable viewing formats. The Activeworx diagram engine offers flexible and interactive graphing capabilities for a better strategic understanding of compliance posture and more effective forensic diagnosis of security breaches.
- **Total Integration with Activeworx™ Product Line**
No cross-functionality concerns. The Activeworx™ family of products can be used as stand-alone products, or as part of a truly integrated security and log management suite.

Appliance Options:

Entry Level 1U Appliance

This appliance has the basic features

CPU : Quad Core Xeon X3230 2.66Ghz, 2x4 Cache, 1066Mhz FSB

Memory: 4GB DDR2, 800MHZ

Disk : 2 x 500GB 7.2K RPM SATA 3Gbps

CDRom : 8x DVD

NIC : Embedded Gigabit

Power : Single Power supply

OS : Windows 2008 Standard x64

Mid range 1U Appliance

This adds to the entry level appliance with hot swappable drives, more memory and an additional Power Supply.

CPU : Quad Core Xeon X3230 2.66Ghz, 2x4 Cache, 1066Mhz FSB

Memory: 8GB DDR2, 800MHZ

Disk : 2 x Hotplug 1TB 7.2K RPM SATA 3Gbps

CDRom : 8x DVD

NIC : Embedded Gigabit

Power : Dual Power supply

OS : Windows 2008 Standard x64

High end 2U appliance

This appliance adds to the midrange by adding more CPU, memory and faster disks along with a high-end NIC.

CPU : Dual - Quad Core Xeon E5440 2.83Ghz, 2x4 Cache, 1333Mhz FSB

Memory: 16GB DDR2, 800MHZ

Disk : 4 x Hotplug 300GB 15K RPM SAS 3Gbps

CDRom : 8x DVD

NIC : Intel Pro 1000PT Dual Port Gigabit NIC

Power : Dual Power supply

OS : Windows 2008 Enterprise x64



CrossTec Corporation
500 NE Spanish River Blvd
Suite 201
Boca Raton, FL 33431
(800)675.0729
fax (561)391.5820