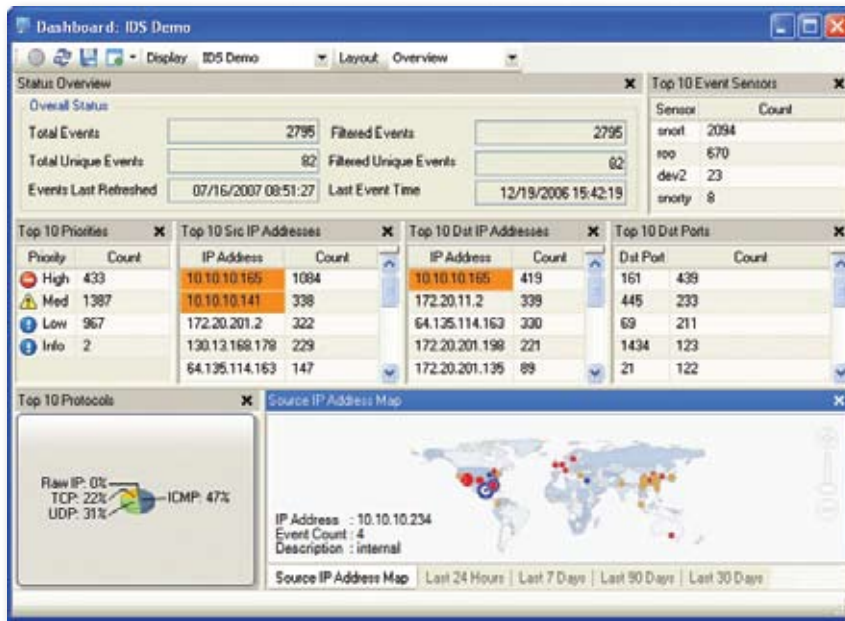


Activeworx Security Center™



Activeworx ASC™
www.CrossTecSoftware.com

Activeworx Security Center™ (ASC) is a full featured Security Information and Event Management software solution. Discover risks, correlate relevant security information, evaluate vulnerabilities and communicate actionable threats to security teams.

ASC provides organizations with comprehensive, real-time security information analysis in a fully customizable dashboard setting. ASC's strong correlation engine, and the most flexible and robust reporting capabilities available, make this software distinctive. By centrally collecting and analyzing security data from dissimilar devices, ASC helps administrators manage information risk and protect critical data and corporate assets. ASC can also correlate events from different assets with vulnerability scanners in real-time, thus giving administrators the ability to adapt to new security threats as they arise.

ASC can monitor, analyze and alert on almost any event generated on a network to determine security and forensic information. Activeworx's intuitive design is both easy to install and easy to use and provides mission-critical security tools at an affordable price.

Benefits

- **Save Money** – Activeworx Security Center's modular design, multiple vendor support, easy installation and live "in your environment" evaluations provides immediate value and eliminates the need for expensive post-purchase installation consultancy.
- **Save Time** – ASC ties in logs and data from all of your security devices to provide you with critical alerts, out-of-the-box reports for compliance and built-in forensics tools. Drilling down into events of interest can be accomplished promptly. ASC installs in a fraction of the time of other SIEM tools.
- **Flexibility** - ASC's robust, built-in reporting engine and multi-vendor support enables administrators to leverage current technologies and is flexible enough to support any new technologies as they are implemented. ASC's modular design allows organizations to install units as needed and add new ones as security needs change.

CrossTec Corporation
500 NE Spanish River Blvd
Suite 201
Boca Raton, FL 33431
(800)675.0729
fax (561)391.5820



www.CrossTecSoftware.com

Activeworx Security Center™

Features

- **Centralize Events**
ASC provides powerful rules-based collection that enables you to collect, normalize and import events into local and centralized databases. Activeworx supports both MySQL and Microsoft SQL. The collector handles events through many standardized protocols from virtually any source.
- **Enterprise Class Reporting**
Reporting is one of the most powerful features of Activeworx. Its enterprise class reporting engine handles reporting on millions of events. ASC generates clean looking graphical reports for management and detailed reports for analysts.
- **Detailed Alerting**
Knowing when an event has occurred is imperative to security administrators. ASC provides simple rules-based alerting and complex alerting through several standardized protocols, such as email and Syslog.
- **Event Relationship Diagrams**
Activeworx has a powerful diagram engine that displays events and their relationships. Once these events are displayed, they can be replayed in the order in which they occurred, events can be color coded to highlight different characteristics, can perform different types of auto layouts to change the way in which the events are being displayed, or an administrator can drill down into the events to gather more details.
- **Strong Forensic Tools**
Activeworx enables you to easily drill down into event data providing vital details to help you investigate threats and attacks. It also provides flexible modes of viewing and displaying information to fully understand the actions the attacker took.
- **Flexible Dashboards**
Activeworx provides a complete user customizable dashboard system to show information of interest in over 100 different dashboard panels in different visualization formats. Information can be displayed as lists, graphs, diagrams and geographical maps. Dashboard panels are fully customizable by the individual user to display exactly what is of interest.



CrossTec Corporation
500 NE Spanish River Blvd
Suite 201
Boca Raton, FL 33431
(800)675.0729
fax (561)391.5820